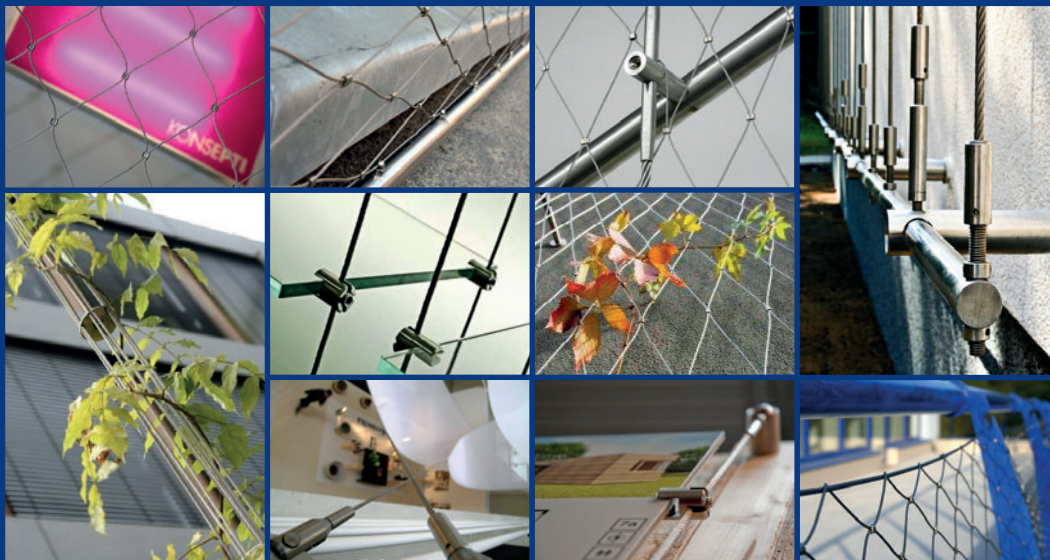




CABLETECH®

stainless cable systems



www.cabletech.com

Designed by Matej4212

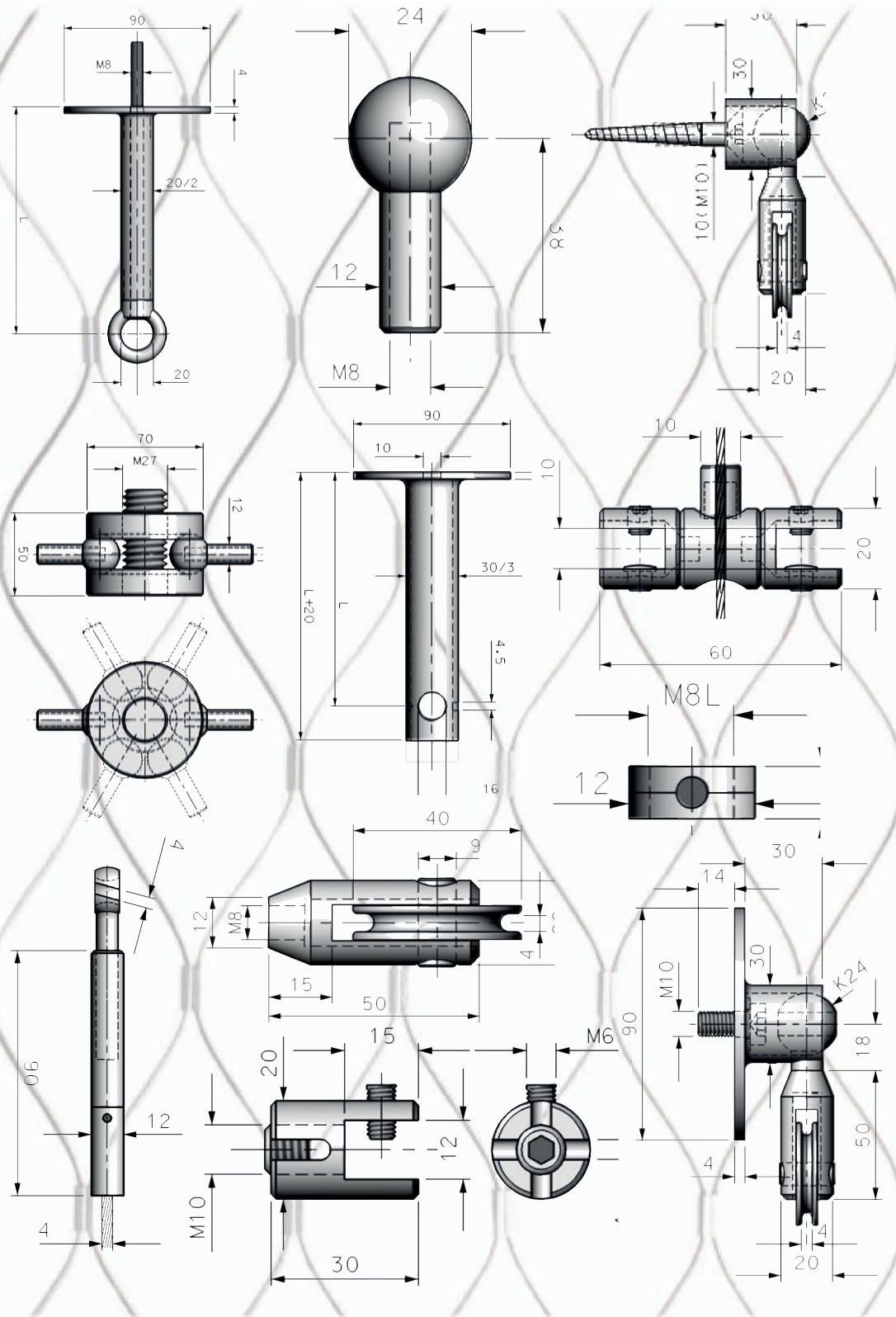
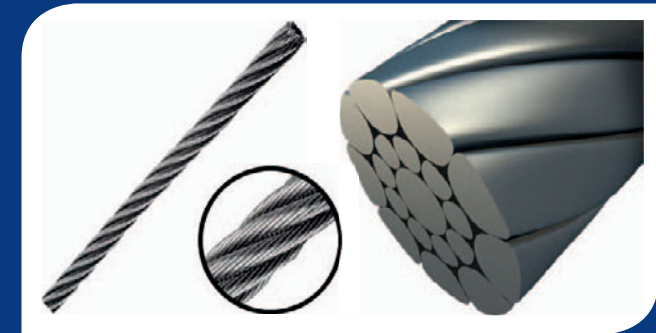


Table of contents

| | |
|---|-------|
| Company profile | 2 |
| Our specialization | 2 |
| CABLETECH® Rope Systems | 2 |
| What we offer | 3 |
| Scope of supply | 3 |
| Guaranteed stability of our nets | 4 |
| The future is green | 4 |
| Featured reference projects | 5-6 |
| Explanatory notes to above projects | 27-30 |



CABLETECH® product lines

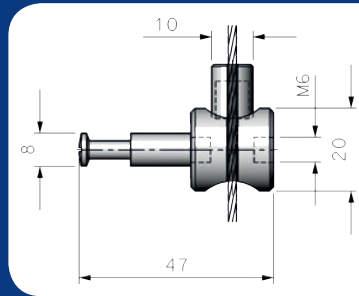
| | |
|--------------------------------------|-------|
| Greening systems | 7-12 |
| Protective and separation nets | 13-16 |
| Balustrade infills | 17-21 |
| Suspension systems | 22-23 |
| Design structures | 24-26 |

Company profile

CABLETECH® is a Czech manufacturer and supplier of stainless steel rope systems for Architecture, operating in the market since 2004.

Our specialization

- » Greening systems
- » Protective and separation nets
- » Balustrade infills
- » Suspension systems
- » Design structures



CABLETECH® Rope Systems

CABLETECH® Rope Systems is a premium-quality, custom-manufactured product that is highly compatible with creative contemporary architecture.

Due to the continuous evolution we can flexibly react to the individual requirements of architects and new building technologies. For example, double-step Anchoring System with complete interruption of the thermal bridge, modular compensation elements to guarantee the maximum force in the rope structures or Flexible Net Technology for spatial structures.

CABLETECH® Rope Systems is ideal for complex, variable and aesthetic solutions and have the potential to satisfy a wide variety of requirements.

What we offer

» Professional design

The author of all components and assemblies is a National Architecture and Design Awards winner.

» Limitless lifespan

The bulk of the components are made of A4 grade stainless steel.

» Unbeatable price

With our own unique production technology and individual approach to every customer, we always try to achieve the optimum balance between quality and price.

» Technical support of the architect

In case of more complex project we offer a support of the architect.

Scope of supply

- | | |
|-------------------------|------------------------------|
| » Optimized solutions | » Manufacturing and delivery |
| » Architectural project | of selected components |
| » Static analysis | including or excluding |
| | instalation |

The realisation of intelligent and innovative ideas demands a creative partnership of various experts. We know how to optimize project in Cooperation with all parties in the creative process (investor, project's author, constructor, construction manager, or locksmith company).

Count on the proactive support of **CABLETECH®** in developing innovative solutions - from planning phase to turnkey on-site assembly of our products.

Guaranteed stability of our nets

The weave is made of fine and resistant stainless steel ropes which are characterised by a high load capacity and a low self-weight.

The **CABLETECH®** net was subjected to numerous tests and complies with all applicable standards: As a permanent protective and safety net for bridges or observation platforms, it is absolutely UV and weather resistant.

The future is green

Green façades are an expression of a responsible contact with nature; it enriches our daily living environment. With **CABLETECH®** Greening systems greenery can be taken to our cities.

The latest insights on climbing plants combined with tastefully designed and technically sophisticated green training systems open a treasure chest of greening variations and styles.



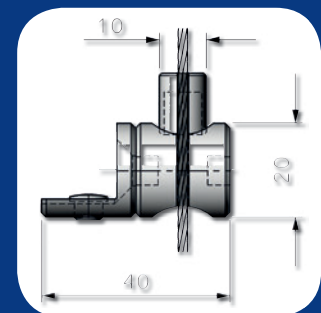
Greening makes sense even from a construction physics point of view and has many ecological benefits. The future is indeed green: it will be shaped by the creative collaboration of innovation-driven architects with greening specialists, among them in place of honor, undoubtedly, **CABLETECH®** company.

Our reference projects

You are invited to take inspiration from the next page following countless successfully implemented reference projects.

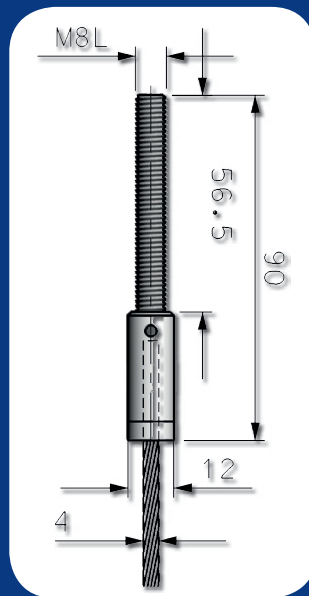
Featured reference projects

- » Prague, CSOB Radlicka – greening systems for the bank campus
- » Prague, Hanspaulka – greening systems around the circular house
- » Prague, Vysocany – fire escape stairways cladding (ORCO)
- » Finland, Net infills for the footbridge over the river
- » Germany, Neuschoenau – footbridge among the treetops (Tree top walk)
- » Prague, Ocelarska footbridge (bikepath) – protective nets
- » Prague, Zapadni mesto – Rope Systems for climbing plants
- » Hradec Kralove, Cultural Information Centre – greening & protective nets
- » Olomouc, Sport hall – Decorative 3D structures for façade design
- » Serbia, Belgrade, Family house „Wave“ – Decorative 3D nets
- » Bratislava, Digital Park II, Penta – greening systems & railing infills
- » Humpolec, Hranipex – greening nets for the warehouse
- » Caslav, Less – interior and exterior greening systems
- » Zlin, Cultural and Information Centre – 3D decoration nets on the roof
- » Prague, Glass and ceramics laboratories – nets around the stairways
- » Prague, Parking building Telefonica O2 – exterior greening nets
- » Plzen, Parking building Rychtarka – exterior greening nets
- » Semily, Footbridge over the Jizera river – net balustrade infills
- » Prague, Petrske namesti, interior and exterior protective nets
- » Brno, Villa Tugendhat, UNESCO monument – cable greening systems
- » Brno, JAMU (UNISTAV, OHLZS) – exterior cable greening systems
- » Prague, Pruhonice, Alzheimer centrum – aviary
- » Hluboka nad Vltavou, ZOO – bird pavilion
- » Prague, Villa Verde – greening systems
- » Moscow, Telekom City – greening systems
- » Brno, ZOO – aviary for owls pavilion
- » Prague, Cortex offices building
- » Mlada Boleslav, Skoda car manufacturer hall



Featured reference projects

- » Prague, Apartment block Na Radosti – greening systems (BAK)
- » Lipno, Tree Top walk (direct cooperation with an investor)
- » Rakousko, Heidenreichstein, Hranipex – balustrade infills
- » Prague, Office buildings for Seznam.cz, Krizik Palace
- » Trebic, Protective nets for a lookout tower (Vitkovice engineering)
- » Prague, Chuchle elementary school – sophisticated shading systems
- » Prague, Apartment block V Mezihori – greening systems (BAK)
- » Brno, Caitec – greening systems (Konsit)
- » Brno, Greening systems for parking building
- » Plzen, ZSS (ABADIA)
- » Olomouc, ZOO enclosures
- » Prague, Luziny business center (Syner)
- » Prague, Hotel Maximilian
- » Susice, Swimming pool - net protection systems
- » Prague, Greening systems for church building
- » Ladna, cemetery fence
- » Susice, Footbridge over the Rousarka river
- » Tachov, Protective nets for the lookout tower
- » Prague, Kotva shopping mall - sliding fence
- » Prague, Drahobejlova house – greening systems
- » Prague, Family house Nad Sarkou – greening systems
- » Ostrava, Privoz – revitalization of the train station - design nets
- » Mlada Boleslav, AUTOSKODA Cesana – production hall (Metrostav)
- » Bratislava, Digitalpark III (Penta) – cable greening systems in Lobby
- » Prague, Main Point Karlin - 3D decorative design structures (PSJ)
- » Chomutov, Chomutovka Business Center - 3D decorative structures
- » Maledivy, Oceania - protective nets in the child's playground
- » Prague, Blanka tunnel – greening nets for the tunnel outlets
- » Ceske Budejovice, greening systems for UNICREDIT Bank (Metrostav)



Greening systems

Light and fine **CABLETECH®** plant training system providing support and guidance for greening. They meet the requirements for additional full-grown vegetation (esp. in cities) in the form of green façades.

Examples of applications

Greening systems for exterior:

parking buildings, industrial halls, logistics centers, business centers; spatial structures, green façades, pergolas, fences, walls, etc.

Greening systems for interior:

atriums, foyers, lobbies, offices, interior spatial structures, interior vegetation walls, etc.



Greening systems



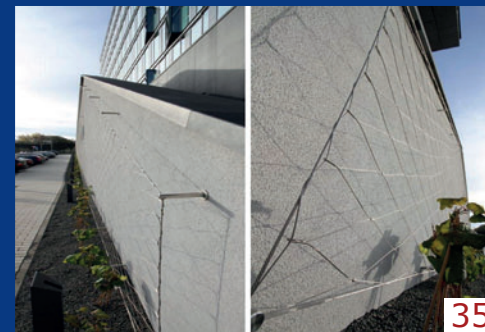
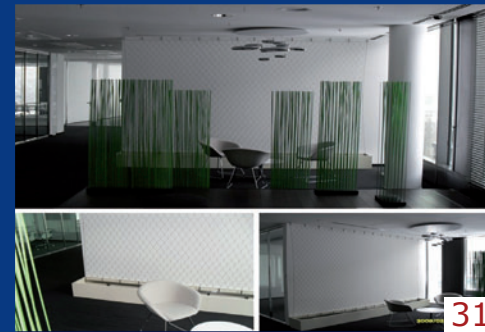
Greening systems



Greening systems



Greening systems



Greening systems



37



38



39



40

CABLETECH® greening systems are appealing, ecologically sensible and useful. In addition, they are characterised by a long lifetime and zero maintenance.

Protective and separation nets

Diagonal, multifunctional and flexible **CABLETECH®** nets for the widest range of applications - especially as fall protection system or barrier to restrict passing through of persons or moving of breeding animals.

Examples of applications

- » Safety nets for stairways, fanlights, french windows, etc.
- » Separation nets and barriers to define space, land, etc.
- » Nets for transparent zoo enclosures (cages, aviaries) of every imaginable form
- » Ball catch nets
- » Fall protection for helipads
- » Anti-hurricane nets
- » Decoration nets



41



42

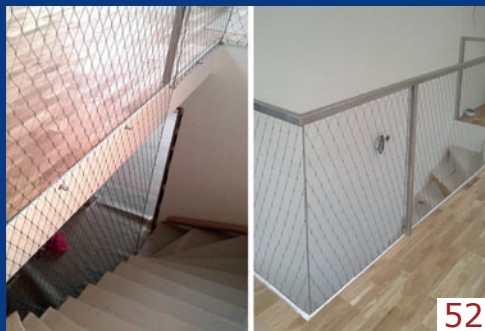
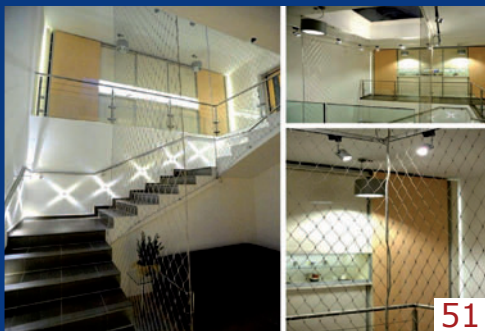
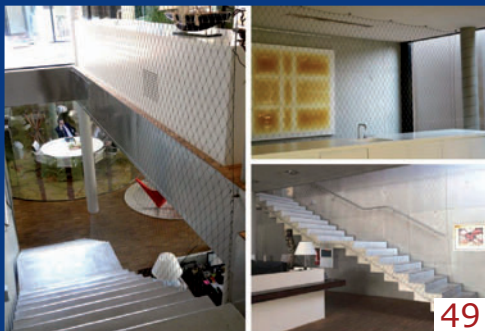
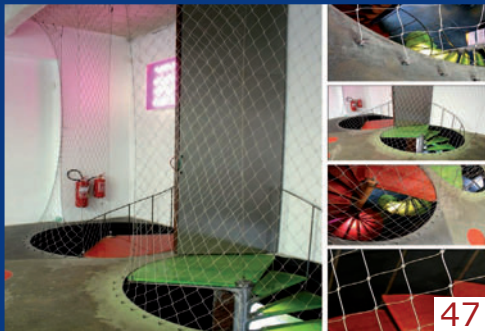


43



44

Protective and separation nets



Protective and separation nets



Protective and separation nets



61



62

Combined with stainless frames of CABLETECH® anchoring system it perfectly fulfills its function as a protective and separating structure and provides appeal as an elegant design element.

Balustrade infills

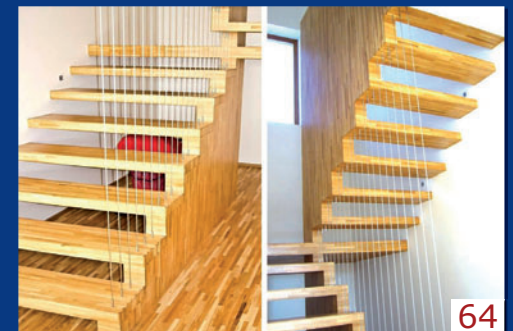
CABLETECH® infills are intended for mounting the railings structures using the separate parallel cables or diagonal cable nets. Their application brings an excellent protective and aesthetics qualities.

Examples of applications

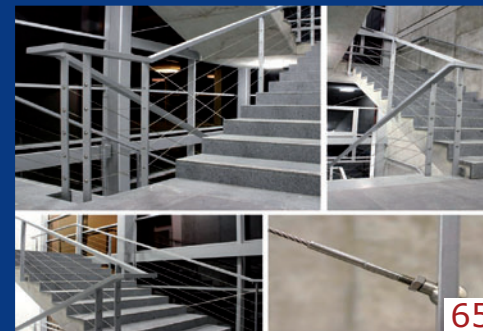
Cable or net balustrade infills (for stairways, terraces, French style windows, skylights, etc.)



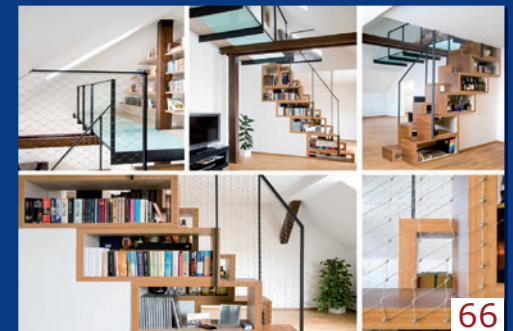
63



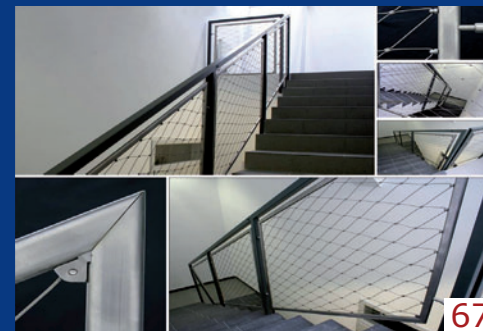
64



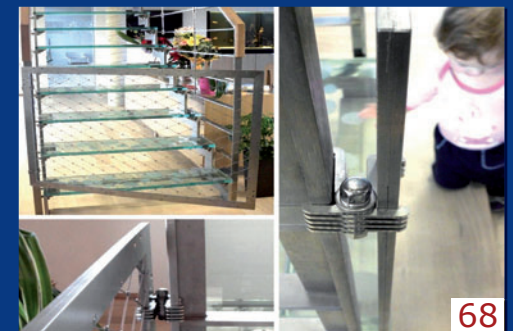
65



66

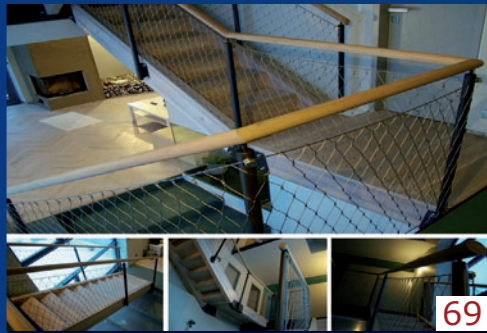


67



68

Balustrade infills



69



70



71



72



73



74



75



76

Balustrade infills



77



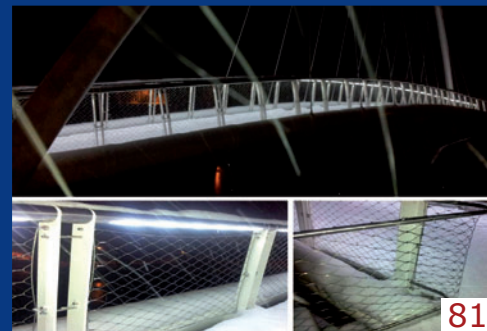
78



79



80



81



82



83



84

Balustrade infills



85



86



87



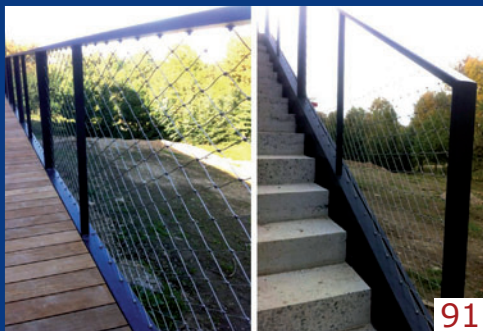
88



89



90



91



92

Balustrade infills



93



94



95

Subtle structure of stainless steel ropes and nets from the CABLETECH® series is elegant and durable - perfectly fulfills its protective function and creates fine aesthetic accents.

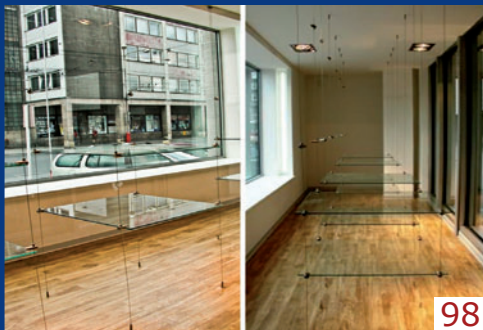
CABLETECH® infills are supplied in the form of frames with integrated infills (i.e. LUX or FLEX frames) or custom-made to string own customer frames. Further also as rope assemblies or net yardage, which enables to form from these yardage - without cutting - an oblique-angled shapes of infills (i.e. in stairways).

Suspension systems

CABLETECH® Rope Suspension Systems for mounting flat or spatial elements using the cable, rod and other forms of binding. They serve for innovative solutions in mainly indoor Architecture.

Examples of applications

- » Carriers for hanging advertising elements, sails, etc.
- » Exhibition and rack systems
- » Anti-noise structures
- » Decorative cladding for buildings
- » Supporting and suspension structures
- » Wind bracings



Suspension systems



With the combination of **CABLETECH®** elements arise creative and innovative solutions, i.e. in the areas of exhibitions, product presentations, racking systems or other suspensions.

Design structures

CABLETECH® Design structures are unique self-supporting spatial elements serving as supporting structures for greening, vertical or horizontal communications and as art objects for Architecture.

Examples of applications

- » Design structures used as Plant Training Systems or lighting
- » Observation towers and escape staircase
- » Sky-bridges and sky-footways
- » Spatial art & decoration object for Architecture



104



105



106



107

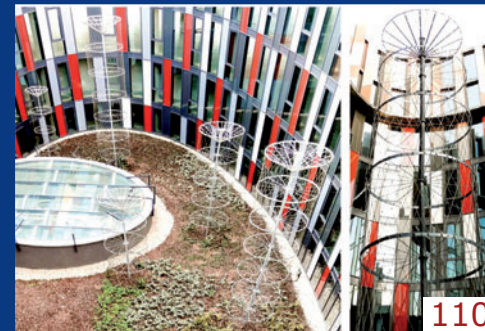
Design structures



108



109



110



111



112



113

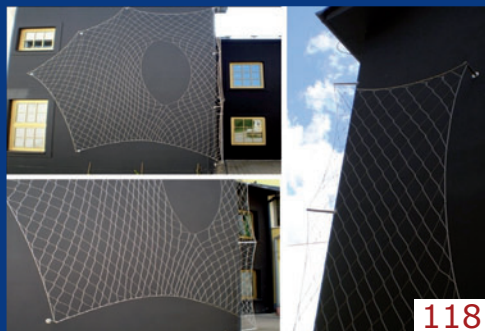


114



115

Design structures



CABLETECH® Flexible Nets act as membrane. The net itself is formed in an area from the basic right-angled rectangular mesh without cutting and clipping together. It is due to fact that the shape and proportions of the individual mesh continuously varies depending on the distribution of forces within the membrane.

These feature we have used for realization of a completely unique projects for example, CSOB Radlicka, BTP Chodov, Golf club in Certovo Bremeno or Zlin Congress center.

Explanatory notes to above projects

1. Greening of the plinths in CSOB 1/2, Prague - Radlice
2. Greening of the plinths in CSOB 2/2, Prague - Radlice
3. Residential complex Slunecny vrsek 1/2, Prague 15 - Kosik
4. Residential complex Slunecny vrsek 2/2, Prague 15 - Kosik
5. Three houses 1/2, Prague 5 - Stodulky
6. Three houses 1/2, Prague 5 - Stodulky
7. Two apartment buildings, Prague
8. Family house Na Lhotach, Prague
9. Digital park III., Bratislava
10. Flat greening systems in foyer, Prague 1 - Na Prikopech
11. Rope structures in the Lannova park, Prague 1 - Old town
12. Air traffic control building, Prague - Ruzyně
13. Reconstruction of the block of flats, Litomysl
14. Kinderkarden Belohorska, Prague - Bila Hora
15. Villa Tugendhat, Brno
16. Mrazovka tunnel, Prague 5 - Smichov
17. Emma Destinova elementary school, Prague 6 - Bubenec
18. Vertical zeppelins for greenery, Prague 13 - Stodulky
19. Zeppelins for greenery in Digital park, Bratislava
20. Business Technology Park 1/2, Prague 4 - Chodov
21. Business Technology Park 2/2, Prague 4 - Chodov
22. Greening systems on the fence, Prague - Strahov
23. Greening systems in the shopping mall foyer, Chomutov
24. Greening systems in Ceska pojistovna, Prague 4 - Pankrac
25. The green nets at the warehouse I., Humpolec - Komorovice
26. The green systems in the atrium of CSOB, Prague 5 - Radlice
27. The green roof above the parking lot of SVK, Hradec Kralove
28. Green façades on the „Wave“ house, Belgrade (Serbia)
29. Trellage nets for family house, Popice u Jihlavy
30. Interior nets in E-GATE, Prague 6 - Dejvice
31. Trellage nets in the foyer of Digital park, Bratislava
32. Greening systems in the garden of the family house, Prague - Podoli
33. Vegetation wall for timber constructions, Kozli u Orlika
34. Luziny shopping centrum, Prague 5
35. Digital park III., Bratislava
36. Greening systems for climbing roses, Prague - Vinohrady
37. Telefonica O2 parking building, Prague - Zizkov
38. The National institute of mental health, Klecany
39. Central Kladno, Kladno

Explanatory notes to above projects

40. Villa Verde, Prague
41. Staircase at ORCO company, Prague 8 - Vysocany
42. Net on the frontage, Brno
43. Antihurricane protective and separation nets, Caribbean
44. Mobile corridor on the roof of Kotva shopping mall, Prague
45. Interior staircase in a family house, Brno
46. A swimming stadium, Susice
47. The staircase in the Cafe Holport Konsepti, Prague 7 - Holesovice
48. Safety net on a family house staircase
49. Nets in the Hranipex production hall, Humpolec
50. Interior staircase for LASAK company, Prague
51. Safety nets in the family house staircase, Roztoky u Prahy
52. Net in the staircase, Prague 10 - Strasnice
53. The staircase for 2N Telekomunikace company, Prague 4 - Modrany
54. Nets in the fire escape staircase, Prague 1 - Petrske namesti
55. Interior net, Prague - Kolodeje
56. The net in the family house interior, Hradec Kralove
57. Penthouse apartment, Prague 3
58. Dividers at Zapadni mesto, Prague - Stodulky
59. A net above the cellar terrace, Humpolec
60. A ceiling of the Keplers High school gym, Prague 6 - Dejvice
61. An aviary for owl and shorebirds in the ZOO, Brno
62. A dog house in the family villa, Celadna
63. Longbar, Cesky Krumlov
64. The railing in the family house staircase, Kunice
65. Interior staircase in VSE, Prague 3 - Zizkov
66. The infill of the interior staircase railing, Prague 6
67. Top centrum Rohovladova Bela, Pardubice
68. „LASER“ frame in the family house, Litomysl
69. The family house staircase, Nachod
70. Exterior staircase in the family house, Jablonec nad Nisou
71. The staircase in the family house, Prague - Radotin
72. Revitalization of downtown, Znojmo
73. The nature museum KONESPREZKA, Dolni Dvoriste
74. The path in the trees 1/2, Germany
75. The path in the trees 2/2, Germany
76. The railing in the terrace, Zdar nad Sazavou
77. Terraces for 2N Telekomunikace company, Prague 4 - Modrany
78. The railing in the family house terrace, Cernosice u Prahy
79. A house at the lake, Stare Splavy

Explanatory notes to above projects

80. The family house, Nachod
81. The footbridge over Jizera river, Semily
82. The LUX frames in the Digital park 1/2, Bratislava
83. The LUX frames in the Digital park 2/2, Bratislava
84. The railing at family house terrace, Dvur Kralove
85. The railing in the terraces, Prague 1 - Petrske namesti
86. The balconies for CSOB, Prague 5 - Radlice
87. The railing in the family house terrace, Cernosice
88. The SIPRAL production hall, Jirny
89. The protection of the staircase in the family house, Horni Kosov
90. The LUX fence components in the family house, Pilsen
91. The LUX frames in the family house terrace, Celadna
92. The family house terrace railing, Brno
93. The family house terrace railing, Prague 6
94. The family house railing, Sobedraz
95. The revitalization of the block of flats balconies, Prague - Barrandov
96. The suspension system for CSOB, Prague 5 - Radlice
97. Budejovicka alej, Prague 4
98. The shelf systems for EUROTEL, Usti nad Labem
99. The suspension system for Boutique Moschino, Prague 1 - Parizska
100. Carriers for sails at Exhibition palace, Prague 7 - Dukelskych hrdinu
101. Anti-noise structures in CSOB, Prague 5 - Radlice
102. Decorative cladding for buildings, Prague - Chuchle
103. The carriers for hanging advertising elements and greenery, Jicin
104. Twister ALCAPLAST, Breclav
105. The vertical zeppelins for greenery, Prague 13 - Stodulky
106. Business Technology Park II., Prague
107. The green roof above the parking lot of SVK, Hradec Kralove
108. The green systems in the atrium of CSOB II., Prague 5 - Radlice
109. The golf club reception, Certovo bremeno
110. The Main Point building, Prague
111. Design cafe, Brno
112. Business Technology Park III., Prague 4 - Chodov
113. Trellage at the entrance to Less a.s. campus, Caslav
114. Green façades of the GEMO sport hall, Olomouc
115. The Congress centrum, Zlin
116. The horizontal zeppelin in Artemide, Prague 2 - Vinohrady
117. The Zeppelin in the Hranipex campus, Humpolec
118. The design net in the Hranipex campus, Humpolec

